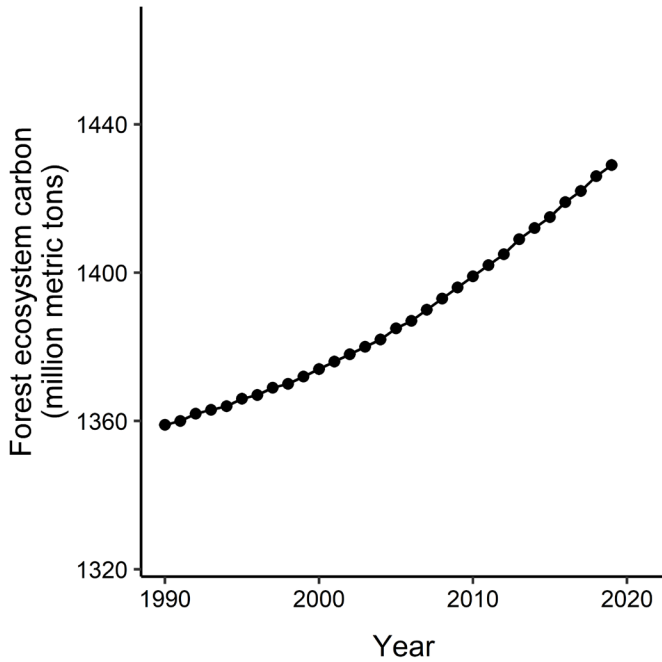
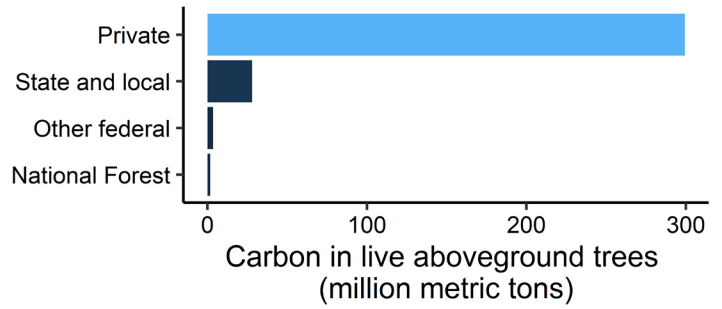




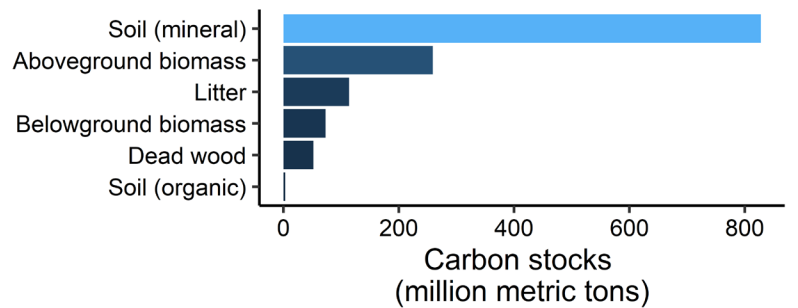
Trends in Maine



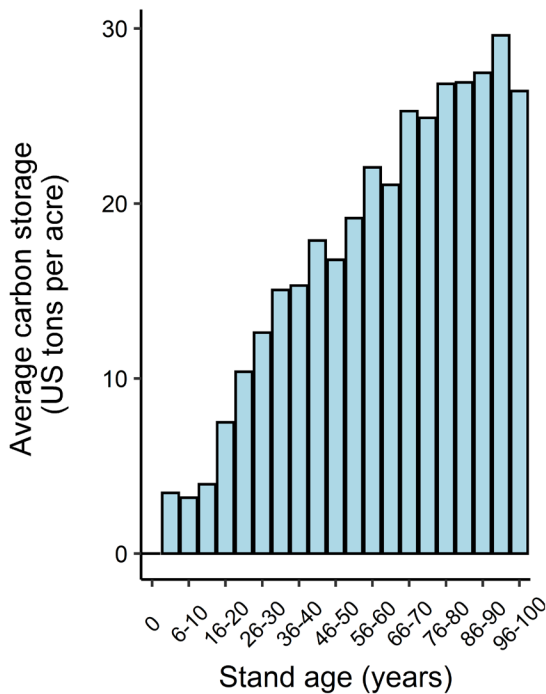
Carbon across ME ownerships



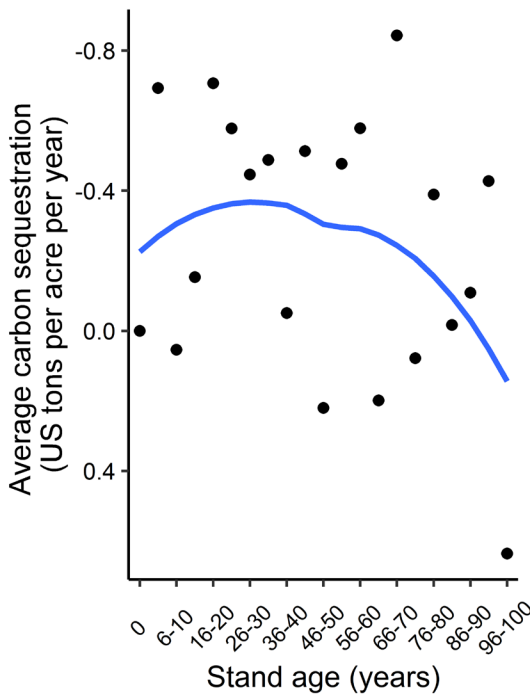
Carbon pools in ME forests



Carbon storage in ME



Carbon sequestration in ME



Carbon Definitions

Carbon pool: a component of the forest that can gain or lose carbon over time

Carbon storage: the amount of carbon retained in a forest and/or carbon pool

Carbon sequestration: the process by which trees and plants use carbon dioxide and photosynthesis to store carbon as biomass

Units: Forest carbon is typically expressed in US tons per acre or metric tons (1 metric ton = 1.10 US tons)

Quick Facts on Forest Carbon

- Maine has 17.6 million acres of forests and is 89% forested.
- Maine forest carbon stocks have increased by 5% from 1990 to 2019.
- Average carbon density in aboveground trees across Maine forests is 20.9 US tons per acre.
- In Maine, forests, urban trees, and harvested wood products:
 - Remove 79% of all CO₂ emissions in the state. (Across the US, this value is 14%.)
 - Store the equivalent of 334 years of all CO₂ emissions produced in the state.