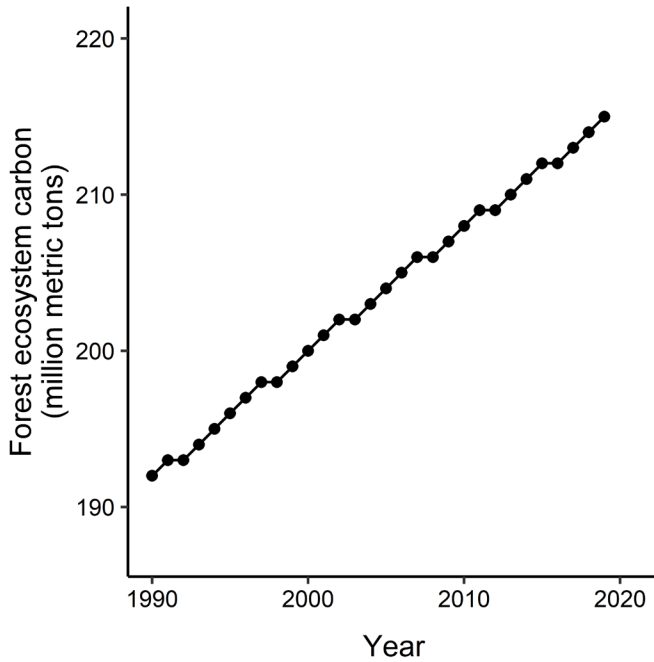
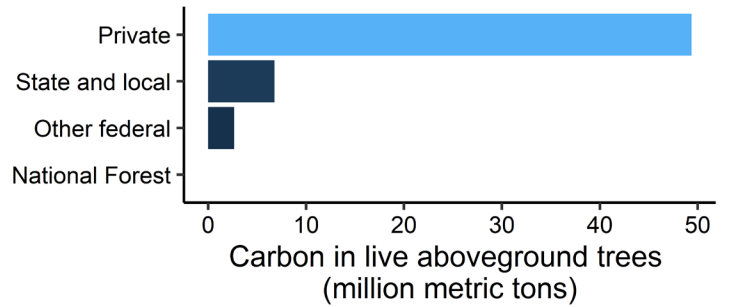




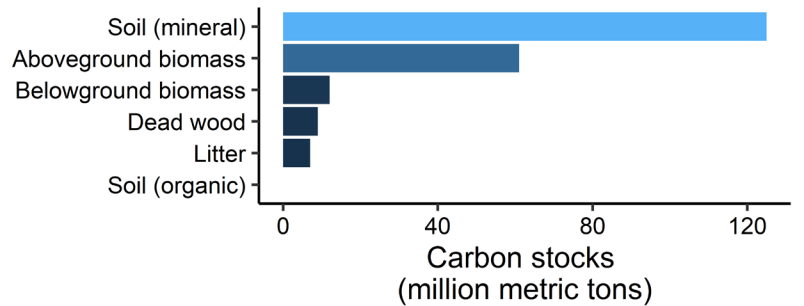
Trends in Iowa



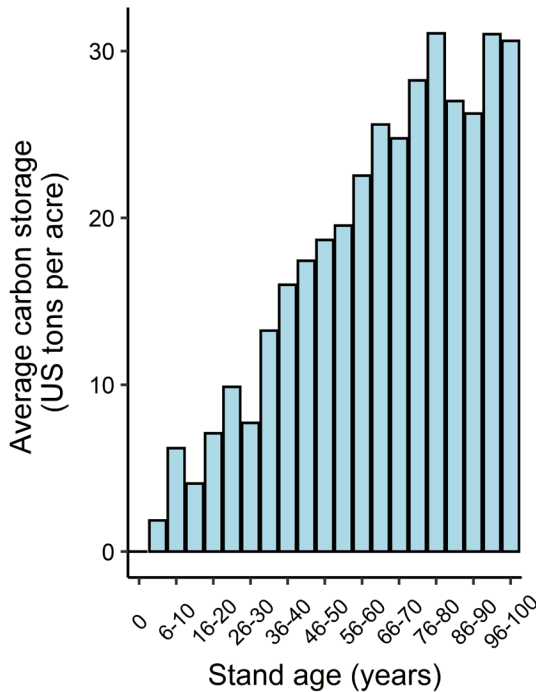
Carbon across IA ownerships



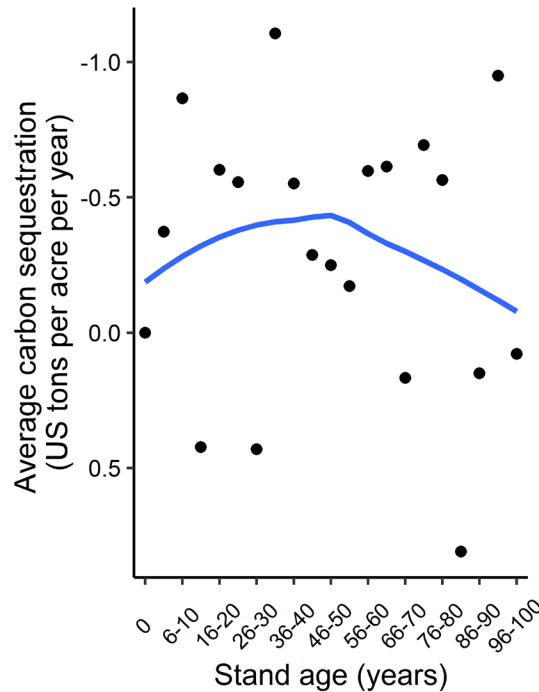
Carbon pools in IA forests



Carbon storage in IA



Carbon sequestration in IA



Carbon Definitions

Carbon pool: a component of the forest that can gain or lose carbon over time

Carbon storage: the amount of carbon retained in a forest and/or carbon pool

Carbon sequestration: the process by which trees and plants use carbon dioxide and photosynthesis to store carbon as biomass

Units: Forest carbon is typically expressed in US tons per acre or metric tons (1 metric ton = 1.10 US tons)

Quick Facts on Forest Carbon

- Iowa has 2.9 million acres of forests and is 8% forested.
- Iowa forest carbon stocks have increased by 12% from 1990 to 2019.
- Average carbon density in aboveground trees across Iowa forests is 22.5 US tons per acre.
- In Iowa, forests, urban trees, and harvested wood products:
 - Remove 4% of all CO₂ emissions in the state. (Across the US, this value is 14%.)
 - Store the equivalent of 10 years of all CO₂ emissions produced in the state.